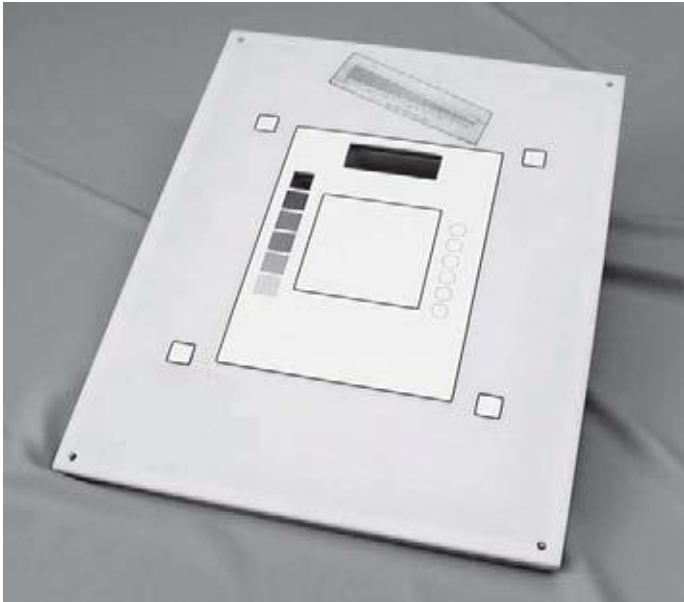


EZ CR/DR “DIN” Test Tool

Model 07-605-7777



- Quick and easily optimize images from your CR/DR system
- Effectively reduces equipment downtime
- Incorporates the “DIN” standard test pattern, DIN 6868/58
- Dramatically reduces repeat patient exams; thus preventing unnecessary patient exposure due to problems related to the image acquisition chain and poor image quality
- Lightweight, durable
- Easy-to-use, no moving parts
- Cost-effective

Introduction

The EZ CR/DR “DIN” Test Tool is a timely and valuable solution to the image quality maintenance problem. Technologists, radiologists and physicists can easily perform quick and reliable assessments of their CR/DR systems.

Today’s new image acquisition chains are considerably more complex than conventional screen/film systems. Computed Radiography (CR)/Digital Radiography (DR) systems involve special processing for each body part. This is controlled by computers, rather than chemical processors and soft copy displays, which are calibrated using light meters rather than visual inspection. CR/DR systems also incorporate laser beams, photomultiplier tubes, network gateways and laser printers. The EZ CR/DR “DIN” Test Tool is designed specifically for evaluating the entire CR/DR image acquisition chain.

Applications

Ideal for use as a preventive maintenance quality control test tool, the EZ CR/DR “DIN” Test Tool can also be used to take regularly scheduled measured data points from the image, such as line pair resolution measurements, ROIs (regions of interest) and geometry symmetry. Measurements/angle can be used to evaluate monitor, as well as printed film image quality.

By performing daily quality control checks, both before the first patient is examined and at the end of the day, equipment problems can be accurately and easily pinpointed and corrected. Equipment downtime will also be significantly reduced, resulting in increased patient throughput. Patients will no longer need to endure repeat exams due to poor image quality.

You’ll soon realize a dramatic savings in film costs when you use our EZ CR/DR “DIN” Test Tool as part of your QC program. In addition, radiological personnel will experience significantly less of the problems and frustrations associated with equipment maintenance and thank you for it.

Features

Now you can quickly check all these important parameters:

- Dynamic range
- Contrast resolution
- Homogeneity
- Resolution

Specifications

Dimensions 14 (w) x 17 (d) x 0.5 in (t)
(35.5 x 43.1 x 1.5 cm)

Weight 7.05 lb (3.20 kg)

Available model(s)

07-605-7777 EZ CR/DR “DIN” Test Tool

For more information, receive our full product catalog, or order online, contact **Radiation Management Services** business of **Fluke Biomedical**: 440.248.9300 or www.flukebiomedical.com/rms.

Specifications are subject to change without notice.

©2005 Fluke Biomedical. All rights reserved. Printed in USA.
07-605-7777-ds rev 2 22 feb 05