

MAXANT MVP Illuminators

Models 77-201VR to 77-266VS

Standard features and benefits

- **Thin 3.375 inch profile**
- **Sturdy steel construction**
- **FLEXI-GRIP, handles all film thicknesses, wet or dry**
- **Continuous bottom film ledge**
- **Minimal 1.8 inch separation between tiers of two tiered fixtures**
- **Shatterproof translucent panel provides consistently even light diffusion**
- **Engineered design easily serviced**
- **Baked white enamel finish**
- **UL listed & CSA approved**



Two panel surface mounted unit (Model 77-202VS)

Optional features and benefits

- **Centralized cluster switching**
- **Film activated micro switch**
- **Multi-panel master switch**
- **Surface mount hardwire**
- **Hospital grade plug**

Introduction

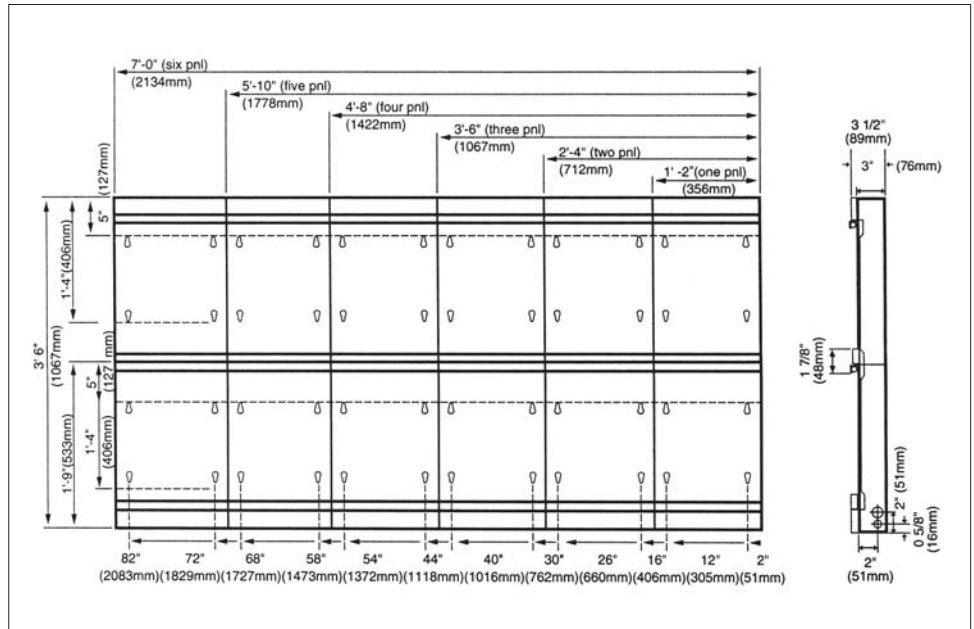
Available in configurations from a single 14 x 17 inch panel up to a six over six, the MAXANT MVP Illuminator is a two lamp light source that emits approximately 2000 NITS of luminescence designed to provide a reliable solution to most viewing needs. The FLEXI-GRIP Film Holding System handles all film thicknesses, wet or dry and requires no field adjustment. The high gloss finish is standard hospital white compatible with most medical facility decors. The shatterproof translucent viewing panel provides consistently even light diffusion and is easily removed for cleaning and maintenance. And the bottom film ledge allows for reading of multiple film sizes on a viewing area. This illuminator is the reliable light source for the value-minded customer.

Applications

The Maxant MVP Illuminators are ideal for use in clinics and private office settings. Rugged and durable, MVP Illuminators combine quality and affordability in one diagnostic viewer.

Specifications

- Each viewing area has a 110 V power supply. Each viewing area contains two 15 W daylight fluorescent lamps which are controlled by two ballast. The ballasts are U.L. listed and C.S.A. approved
- Each MVP viewing panel 110 to 124 V, 60 Hz, 0.7 A per panel
- Two lamps: #F15T8/D or equivalent
- Ground chassis with 3 wire, 6 ft cord and NEMA 5-15, 2 pole, 3 wire ground plug
- No hazardous electrical parts are exposed when the diffusing panel is removed for cleaning or lamp replacement



Surface mounted	Dimensions (inches)			Model	Model with FAS option***	Shipping wgt (lb)
	Viewing area*	Length	Height			
1 panel 14 x 17 inch	14 x 17	14	21	77-201VS	77-201VS-FAS	17
2 panel side by side	28 x 17	28	21	77-202VS	77-202VS-FAS	33
3 panel side by side	42 x 17	42	21	77-203VS	77-203VS-FAS	50
4 panel side by side	56 x 17	56	21	77-204VS	77-204VS-FAS	67
5 panel side by side	70 x 17	70	21	77-205VS	77-205VS-FAS	84
6 panel side by side	84 x 17	84	21	77-206VS	77-206VS-FAS	101
1 over 1, 14 x 17 inch	2 x 14 x 17	14	42	77-211VS	77-211VS-FAS	33
2 over 2	2 x 28 x 17	28	42	77-222VS	77-222VS-FAS	67
3 over 3	2 x 42 x 17	42	42	77-233VS	77-233VS-FAS	101
4 over 4	2 x 56 x 17	56	42	77-244VS	77-244VS-FAS	134
5 over 5	2 x 70 x 17	70	42	77-255VS	77-255VS-FAS	278 (crated)
6 over 6	2 x 84 x 17	84	42	77-266VS	77-266VS-FAS	346 (crated)

* Viewing height is actually 16.5 inches in order that extraneous light is eliminated when standard 14 x 17 inch film is inserted.

*** Film Activated Switches (FAS) options.

Specifications (cont)

Recess mounted	Wall cutout**		Model	Model with FAS option***	Shipping wgt (lb)	
	Viewing area*	Length				Height
1 panel 14 x 17 inch	14 x 17	14.75	21.75	77-201VR	77-201VR-FAS	24
2 panel side by side	28 x 17	28.75	21.75	77-202VR	77-202VR-FAS	48
3 panel side by side	42 x 17	42.75	21.75	77-203VR	77-203VR-FAS	72
4 panel side by side	56 x 17	56.75	21.75	77-204VR	77-204VR-FAS	96
5 panel side by side	70 x 17	70.75	21.75	77-205VR	77-205VR-FAS	120
6 panel side by side	84 x 17	84.75	21.75	77-206VR	77-206VR-FAS	144
1 over 1, 14 x 17 inch	2 x 14 x 17	14.75	42.75	77-211VR	77-211VR-FAS	48
2 over 2	2 x 28 x 17	28.75	42.75	77-222VR	77-222VR-FAS	96
3 over 3	2 x 42 x 17	42.75	42.75	77-233VR	77-233VR-FAS	144
4 over 4	2 x 56 x 17	56.75	42.75	77-244VR	77-244VR-FAS	192
5 over 5	2 x 70 x 17	70.75	42.75	77-255VR	77-255VR-FAS	320 (crated)
6 over 6	2 x 84 x 17	84.75	42.75	77-266VR	77-266VR-FAS	368 (crated)

* Viewing height is actually 16.5 inches in order that extraneous light is eliminated when standard 14 x 17 inch film is inserted.

** Overall recessed fixture dimensions, including recessed trim length and height, are each 3 inches greater than surface mounted dimensions.

*** Film Activated Switches (FAS) options.

Options	
Model	Description (per fixture)
77-CS	Cluster Switching
77-MS	On/Off Master Switch
77-HGP	Hospital Grade Plug
77-HW	Surface Mount/Hard Wired
77-HF	Handle and Non-Skid Feet
Replacement parts	
Model	Description
77-MS-REPL	On/Off Master Switch
77-CS-REPL	Cluster Switching
77-BAL-REPL	Ballast
77-STARTER	Starter
77-HGP-REPL	Hospital Grade Plug
77-DP-REPL	Diffusion Panel (per panel)
77-LC-REPL	Line Cord and Plug Assembly
Model	Description
77-REC/SUR	Recess to Surface (per panel)
77-SUR/REC	Surface to Recess (per panel)

For more information, receive our full product catalog, or order online, contact **Radiation Management Services** business of **Fluke Biomedical**: 440.248.9300 or www.flukebiomedical.com/rms.

Specifications are subject to change without notice.

©2005 Fluke Biomedical. All rights reserved. Printed in USA.
77-201VR-ds rev 2 17 jun 05