

NEMA SCA&I Cardiovascular Fluoroscopic Benchmark Phantom

For voluntary compliance with NEMA XR 21

The CIRS Model 901 NEMA-SCA&I phantom was designed to evaluate and standardize catheterization image quality. It is the result of collaborative efforts between the Society for Cardiac Angiography and Interventions and the National Electric Manufacturers Association. The phantom specifically enables voluntary compliance with the recently published performance standard NEMA XR 21.

The Model 901 is manufactured from PMMA with x-ray absorption properties similar to soft tissue at diagnostic energies. It contains a variety of static and dynamic test targets for objective assessment of resolution, motion unsharpness and radiation exposure. The sectional design allows for configuration in a wide range of thicknesses from 5 cm to 30 cm simulating PA thicknesses from infants to large adult patients.

The phantom is ideal for routine assessment of the entire imaging system.



Model 901

Features

- Designed for voluntary compliance with NEMA XR 21
- Simulates coronary arteries for infant through large adult
- Evaluate spatial resolution, motion unsharpness and exposure for the entire imaging system

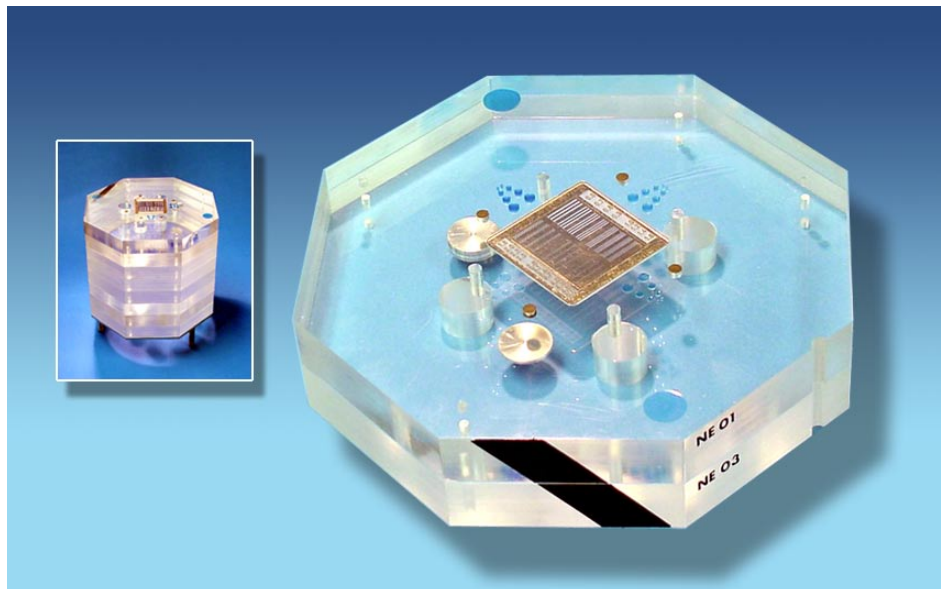
*Tissue Simulation &
Phantom Technology*

CIRS

2428 Alameda Avenue • Suite 212 • Norfolk, Virginia 23513 • USA
(800) 617-1177 • (757) 855-2765 • FAX (757) 857-0523
www.cirsinc.com • admin@cirsinc.com

Model 901 Parts List:

<u>Quantity</u>	<u>Plate Number</u>	<u>Description</u>
1	01	Central Target Assembly
1	02	Working Thickness Range (WTR) Plate A
1	03	WTR Plate B
1	04	WTR Plate C
3	05	WTR Plate D
1	06	WTR Plate E
4	07	Blank Plate with alignment parts
1	08/08A (1ea)	Field Size Plate
1	09	Alignment Target for test stand
1	10	Alignment Cross for test stand
1	11	Alignment Target for small base
1	12	Alignment Cross for small base
1	13	Rotating Target Assembly
1	14	Test Stand
1	15	Small Base
1	16	3 mm thick lead plate with laminate
1	17	2 mm thick copper plate with laminate
35		Alignment pins
Optional		Dosimeter alignment adapter
Optional		Carrying Case



Model 901 Plate 01 & 03 Shown

Refer to NEMA publication [NEMA XR 21 Characteristic of and Test Procedures for a Phantom to Benchmark Cardiac Fluoroscopic and Fluorographic Performance.](#)

Copyright 2000
National Electric Manufacturers Association
1300 North 17th Street, Suite 1847
Rosslyn, VA 22209